

## TIPS: Successful Sealer Application



Concrete sealers serve a very necessary purpose in the beautification and protection of concrete surfaces. The following is a list of guidelines that should be followed when applying membrane forming sealers.

### Surface Preparation:

All surfaces to be sealed MUST be properly cleaned.

- Concrete must be clean, dry and free of contaminants and preferably cool, out of the direct hot sun.
- Orange Peel Citrus Cleaner is ready to use to clean heavy stains and can be diluted for general cleaning.
- Use a stiff scrub brush and Orange Peel to clean the concrete. It is imperative to rinse with clean water prior to

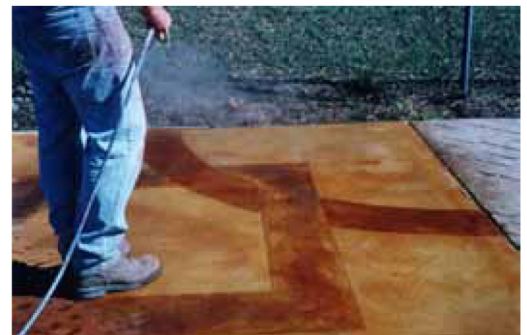
sealer application. Allow at least 12-24 hours before applying acrylic sealer.

- Avoid early morning dew (condensation can be difficult to see and can prevent proper adhesion of sealers).
- Avoid wide variation in temperature between concrete and air temp.
- Patterned/colored concrete – be sure to wash off any residual powder release that may inhibit adhesion of the sealer.
- Sealers applied to hot concrete in direct sun can bubble or flash set creating an uneven appearance.

*NOTE: Soaps and detergents should not be used to clean concrete surfaces prior to sealer application. Detergents are emulsions and if allowed to dry on a surface, they form a barrier that can inhibit adhesion of most acrylic sealers.*

### Application Tools:

- Sealers may be applied with a pump-up sprayer or solvent resistant short nap roller
- If roller applied, do not roll too quickly to avoid whipping air bubbles in sealer or use an application pad.
- If using a sprayer, make sure it is clean and has a fan tip nozzle adequate to apply a uniform membrane. Never let the pressure of the sprayer drop below optimum.
- Clean sprayer immediately following application with Solvent 100 or xylene.



### Sealer Application:

- Test the sealer in an inconspicuous area for desired appearance and to assure proper adhesion.
- Sealer should be applied in a very thin and uniform manner. Back roll any puddles immediately.
- Over application will result in a mottled appearance, could trap moisture, and will not allow sealer to cure properly.
- If at any time the sealer puddles or is over-applied, immediately spray Solvent 100 or xylene on top of the sealer to keep liquid and brush out excess to allow the sealer to properly cure.
- For increased gloss, a second coat may be applied after first coat has thoroughly dried, typically 4-6 hours.
- Two thin coats will produce a better gloss than one heavy coat. Cross roll to ensure even application. Apply one direction and then cross roll in perpendicular direction.